



Follow the Marine Unit
@HantspolMarine



WASH

AND

SLOW



Don't make waves, cut your speed



OPERATION WAVEBREAKER

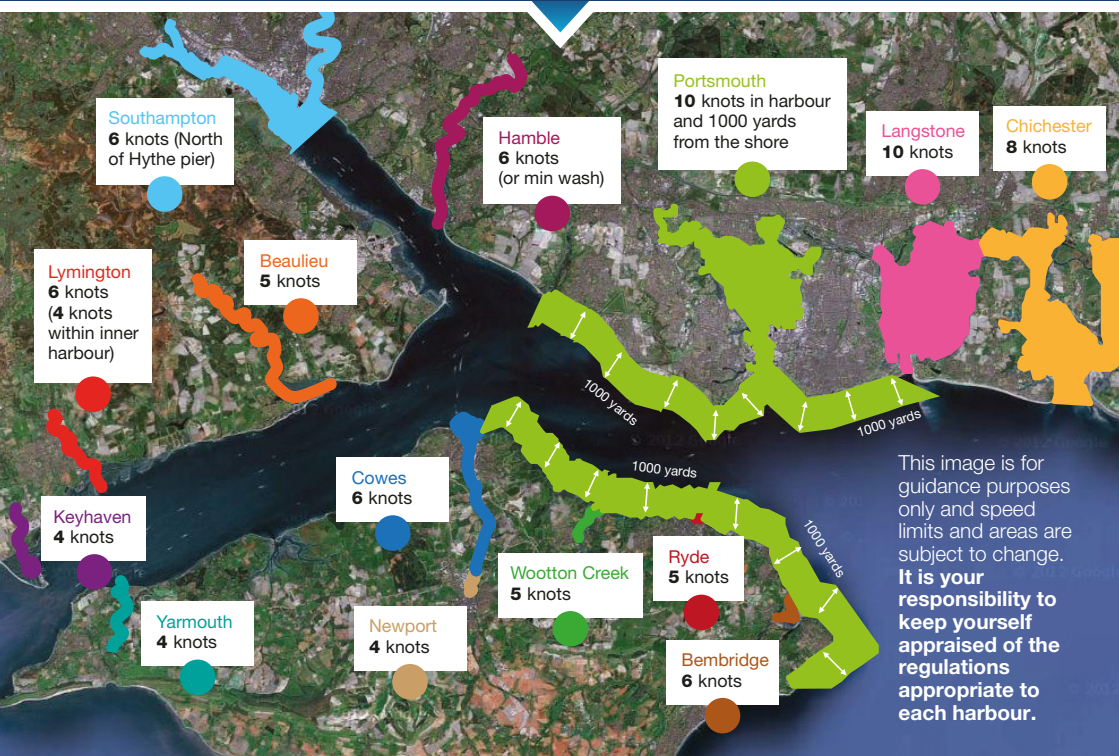


Project **KRAKEN**

Strengthening our borders and
protecting the waters of the Solent



Know your local harbour **speed limits**



COLREGS Rule 6 – **Safe Speed**

Every vessel shall at all times proceed at a safe speed so that she can take proper and effective action to avoid collision and be stopped within the distance appropriate to the prevailing circumstances and conditions.

The following factors should be among those taken into account:

1. The state of visibility
2. The traffic density including concentrations of fishing vessels or any other vessels
3. The manoeuvrability of the vessel with special reference to stopping distance and turning ability in the prevailing conditions
4. The state of wind, sea and current, and the proximity of navigational hazards
5. At night the presence of background light such as from shore lights or other back scatter
6. In instances where radar is being used, the limitations associated with your radar device and general radar navigation must be considered

For more information, search **Hampshire Marine Unit** online.

The police, MCA and harbour masters can prosecute, **don't end up in court!**