



PREMIER
SOVEREIGN HARBOUR

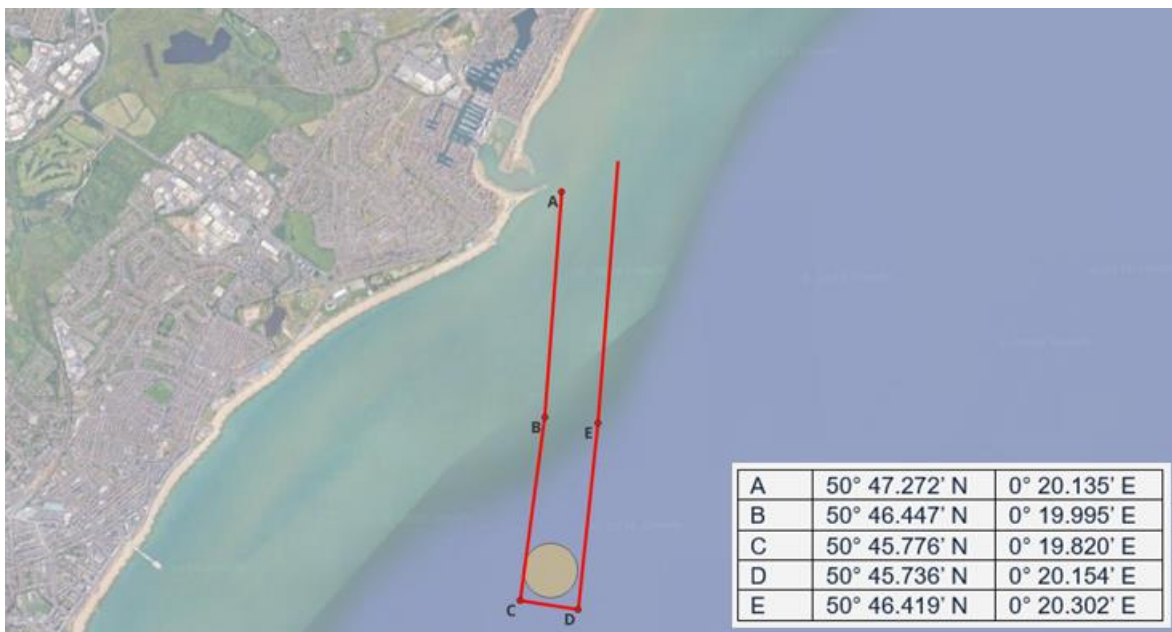
**Local Notice to
Mariners
04-2026**

Sovereign Harbour Entrance Channel

Notification of Maintenance Dredging Operations & dredger sailing route exclusion area

Maintenance Dredging operations are due to commence at Sovereign Harbour on or around Saturday 9th May 2026. To facilitate safe and efficient navigation of the dredger to and from the dispersal site **all fishing vessels are requested to keep the dredger's sailing route free of gear and obstructions**. Further notices will be issued notifying of buoyage removal within the entrance channel.

Mariners are advised to give the dredger a wide berth when passing, especially within the outer harbour. Contact 'Sospan Dau' on VHF Ch17 for permission to pass.



Points shown will be marked by round bufs.

Mariners may contact
'SOVEREIGN HARBOUR'
On VHF Channel 17 for further information

The Harbour Office can be contacted (24hrs)
VHF Ch.17, by telephone (01323 470099) or via email at eastbourne@premiermarinas.com
Premier Marinas (Eastbourne) Ltd

Issued By: D Heckford AFNI, Harbour Master
Issued: 01/05/2026 15:00hrs
Valid: Until Further Notice